

How to Install YE110 Driver for Windows

Step1. Insert the YE100 Card to the PC

1. Power down the PC
2. Unplug the PC from its main AC power supply
3. Insert the YE110 into a 3.3- or 5-volt PCI slot (PCI 2.2 or greater required)
4. Fix the YE110 Card
5. Power on the PC

More Detail please see “**YE110 Hardware Install Guide**”

Step2. Download latest windows driver from

<http://www.yeastar.com/download/YE110Driver.rar>

Step3. Extract YE110Driver.rar to C:\, you will find a new directory C:\YE110Driver\

Step4. If you can find the system prompt windows “Found New Hardware Wizard”, please follow **operation I**. If not, please follow **operation II**.

Operation I

Steps

1. Enter to the interface “Found New Hardware Wizard”.

Choose the advanced mode **install from a list or specific location** then click **Next**.



Figure 1

2. Choose your search and installation options.

a. Select **Search for the best driver in these locations** and **include this location in the search**.

<http://www.yeastar.com>

support@yeastar.com

b. Click **Browse** to select the driver location (windows 2000, windows XP or windows 2003) and click **Next**. (See Figure2)

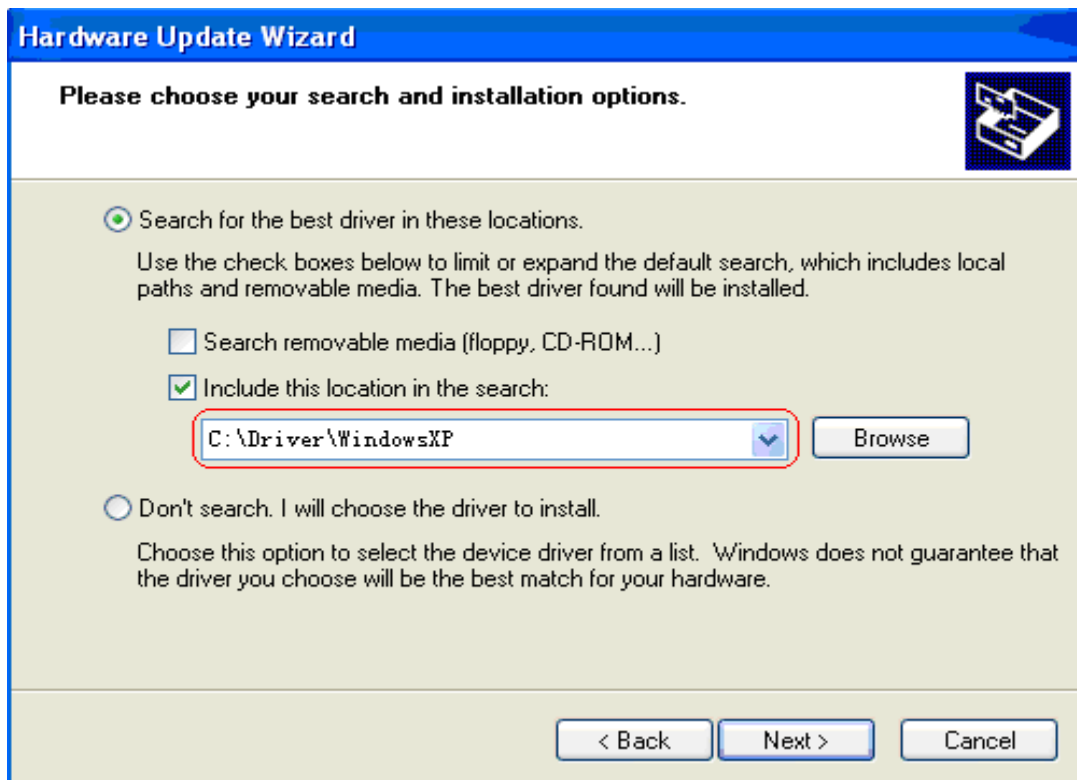


Figure 2

c. Wait a moment while the wizard is searching. (As Figure 3)

d. Maybe a dialogue box as Figure 4 will be pop-up, click **Continue Anyway** to proceed with installation. (See Figure 4)

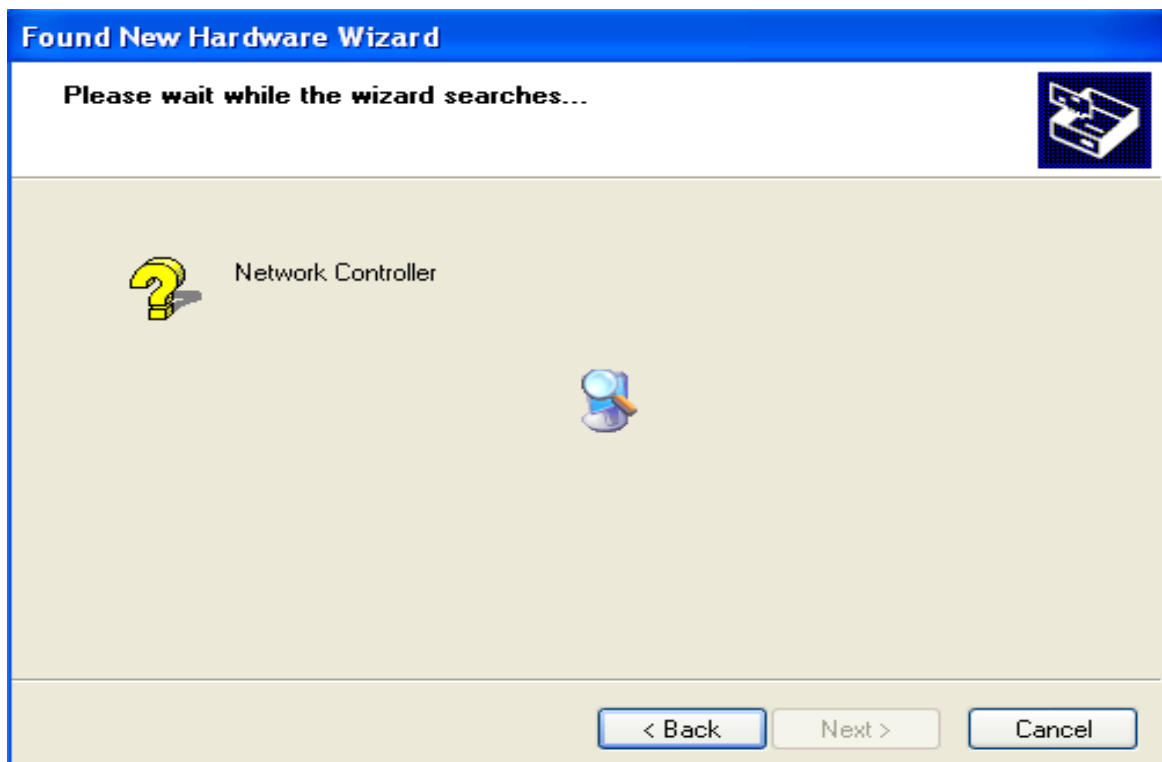


Figure 3



Figure 4

3. Complete the found task

Click **Finish** to successfully install the driver. (See Figure 5)



Figure 5

4. Your TDM800 PBX Gateway Card driver has been set up. Confirm it as following:
- Click **Start** ⇒ **Control Panel** ⇒ **Performance and Maintenance** ⇒ **System**
 - Choose Hardware and click **Device Manager**. (See Figure 6)

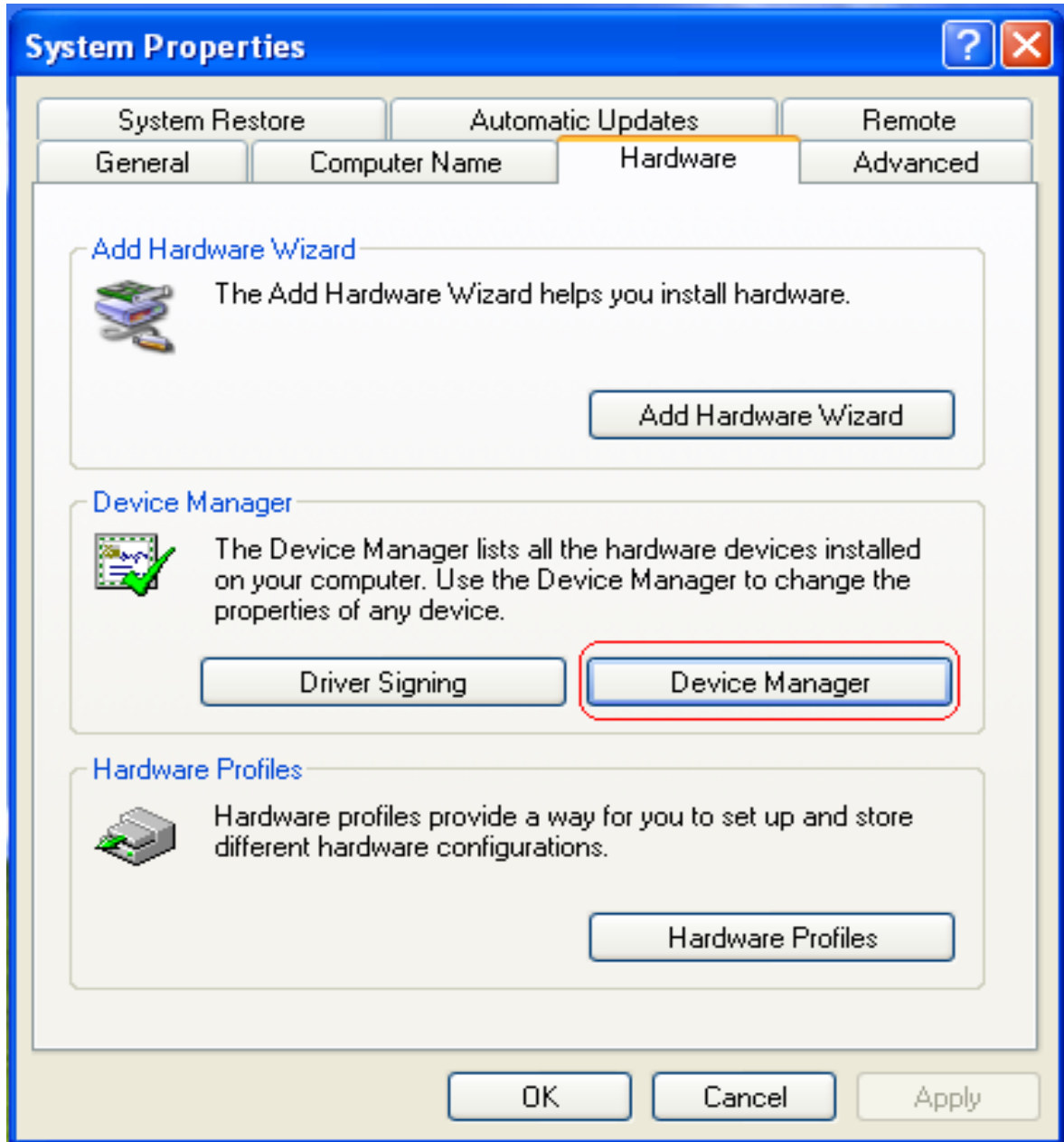


Figure 6

- Find out TDM800 PBX Gateway Card in Device Manager. (See Figure 7)

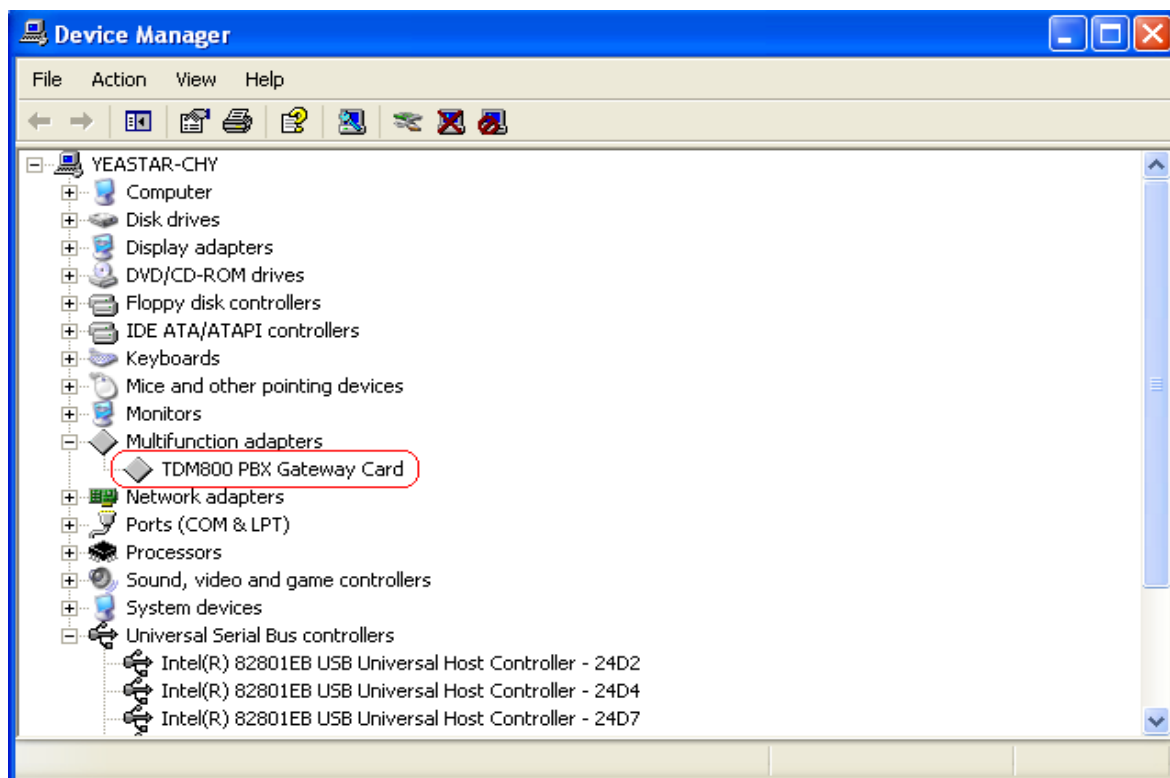


Figure 7

Attention: You should find the LEDs of relevant modules on TDM800 card were lighted if the driver has been successfully installed on PC.

Operation II

Steps

1. Click **Start** ⇒ **Control Panel** ⇒ **Performance and Maintenance** ⇒ **System**
2. Choose Hardware and click **Device Manager**. (See Figure 8)

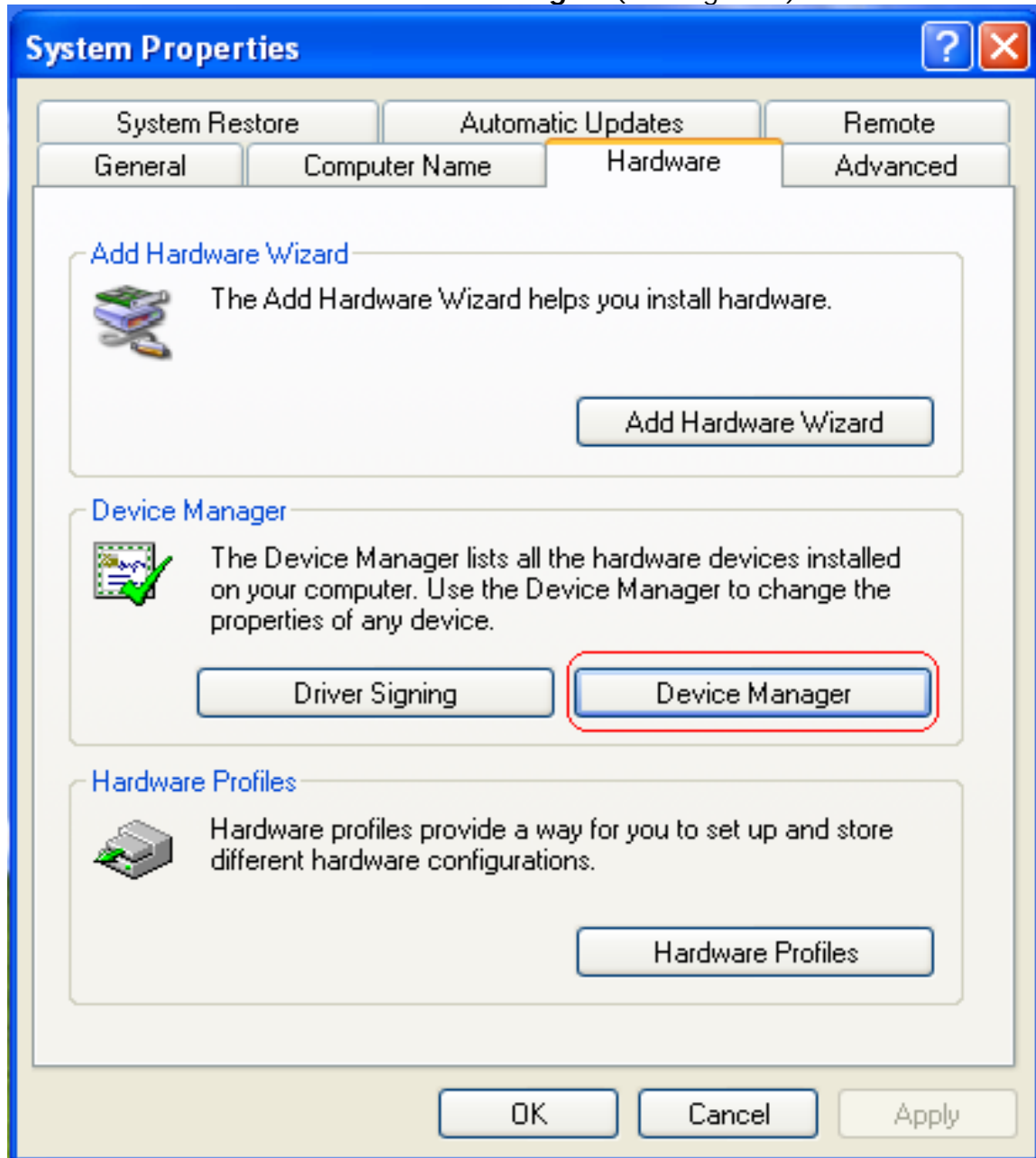


Figure 8

3. Click **Other devices** to find **Network Controller**. Click the right button to find **Properties**. (See Figure 9 &10)

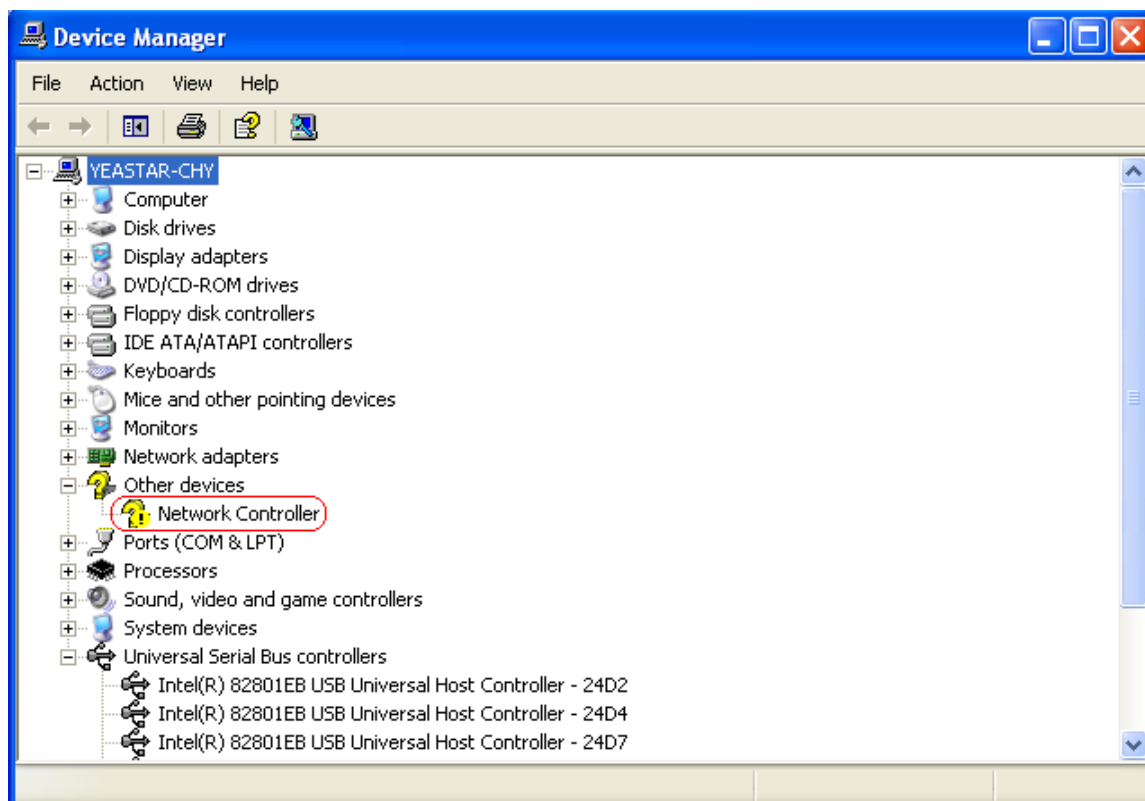


Figure 9

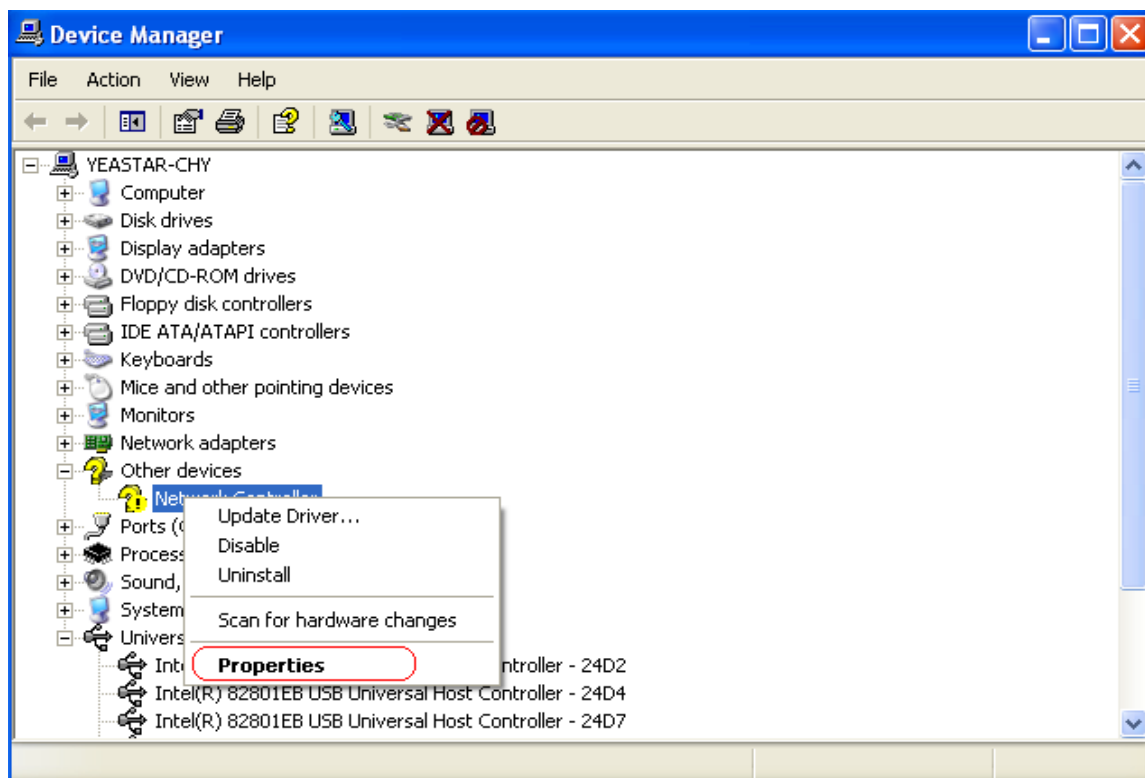


Figure 10

4. Click the **Driver** on **Network Controller Properties** then choose **Update Driver**.
(See Figure 11)

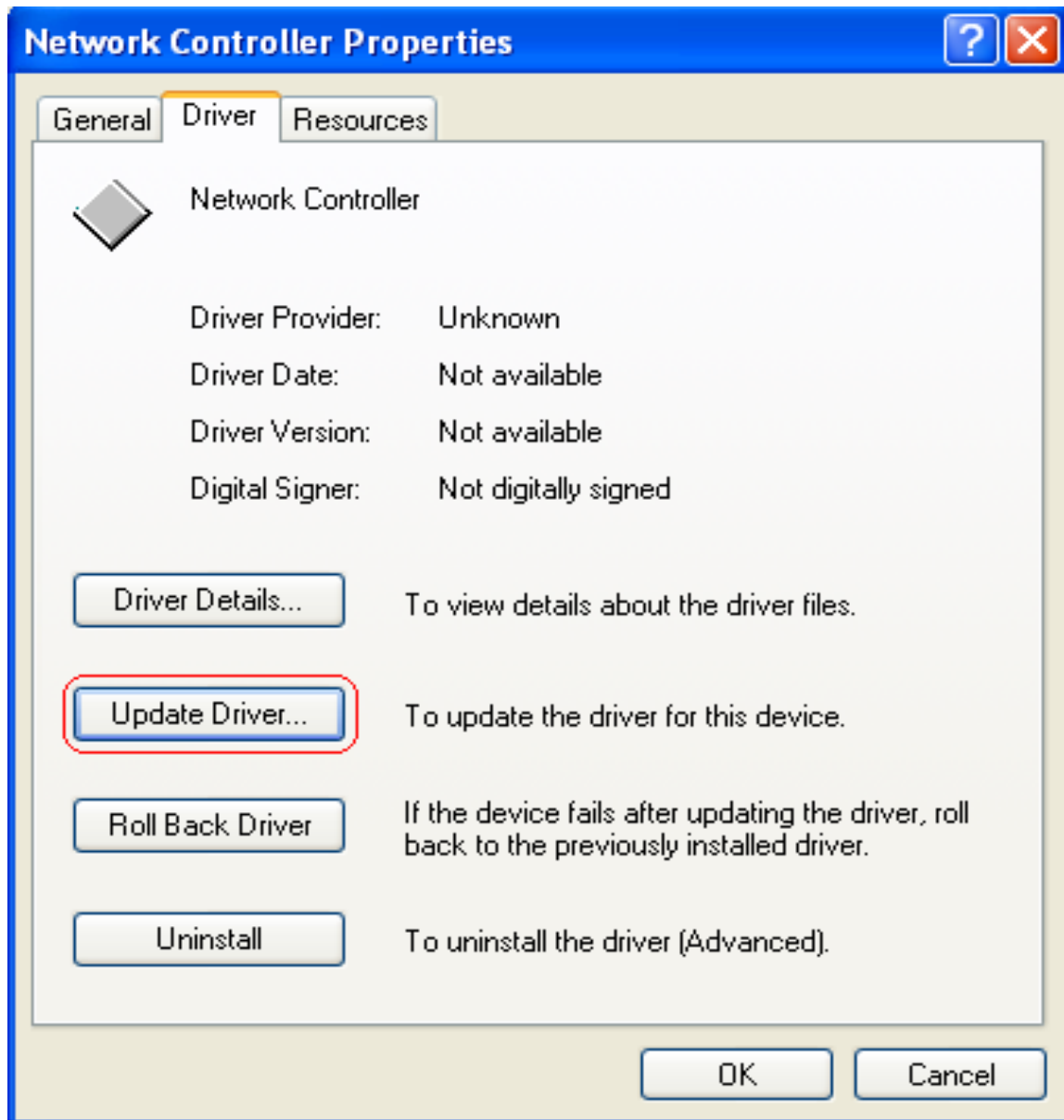


Figure 11

5. Hardware Update Wizard.
Choose the advanced mode **install from a list or specific location** then click **Next**.
(See Figure12)



Figure 12

6. Choose search and installation options.

a. Search for the best driver in these locations and include this location in the search.

b. Click Browse to select the driver location (windows 2000, windows XP or windows 2003) and click **Next**. (See Figure13)

c. Wait a moment while the wizard is searching. (As Figure 14)

d. Maybe a dialogue box as Figure 15 will be pop-up, click Continue Anyway to proceed with installation. (See Figure 15)

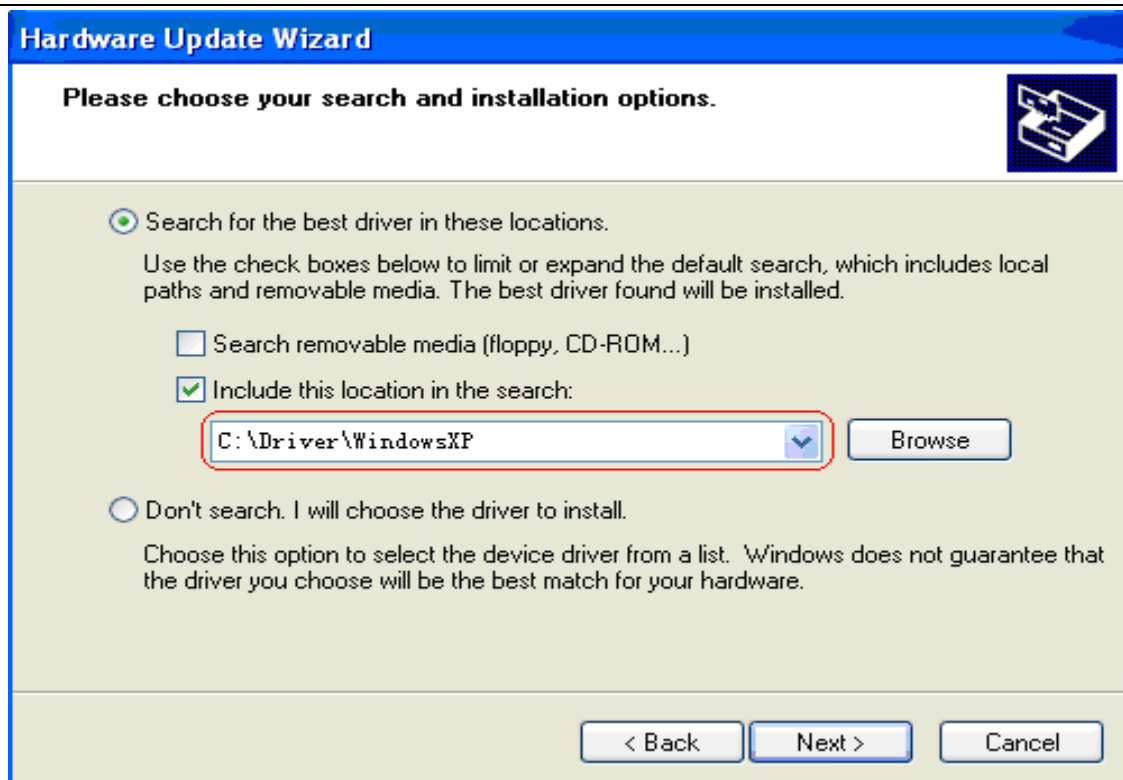


Figure 13

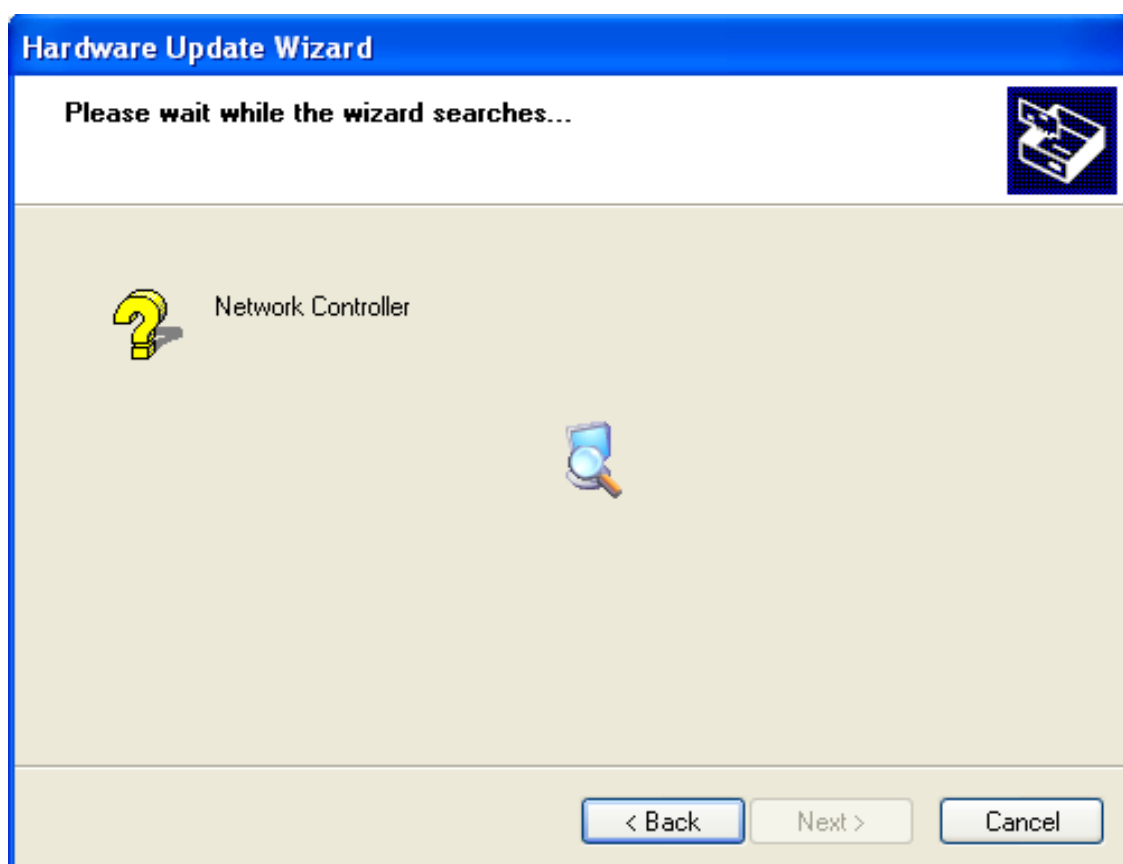


Figure 14



Figure 15

7. Complete the found task.

Click **Finish** to successfully install the driver. (See Figure 16)



Figure 16

8. Your TDM800 PBX Gateway Card driver has been set up. Confirm it as following:
- Click **Start** → **Control Panel** → **Function and Maintenance** → **System**
 - Choose Hardware and click **Device Manager**. (See Figure 17)

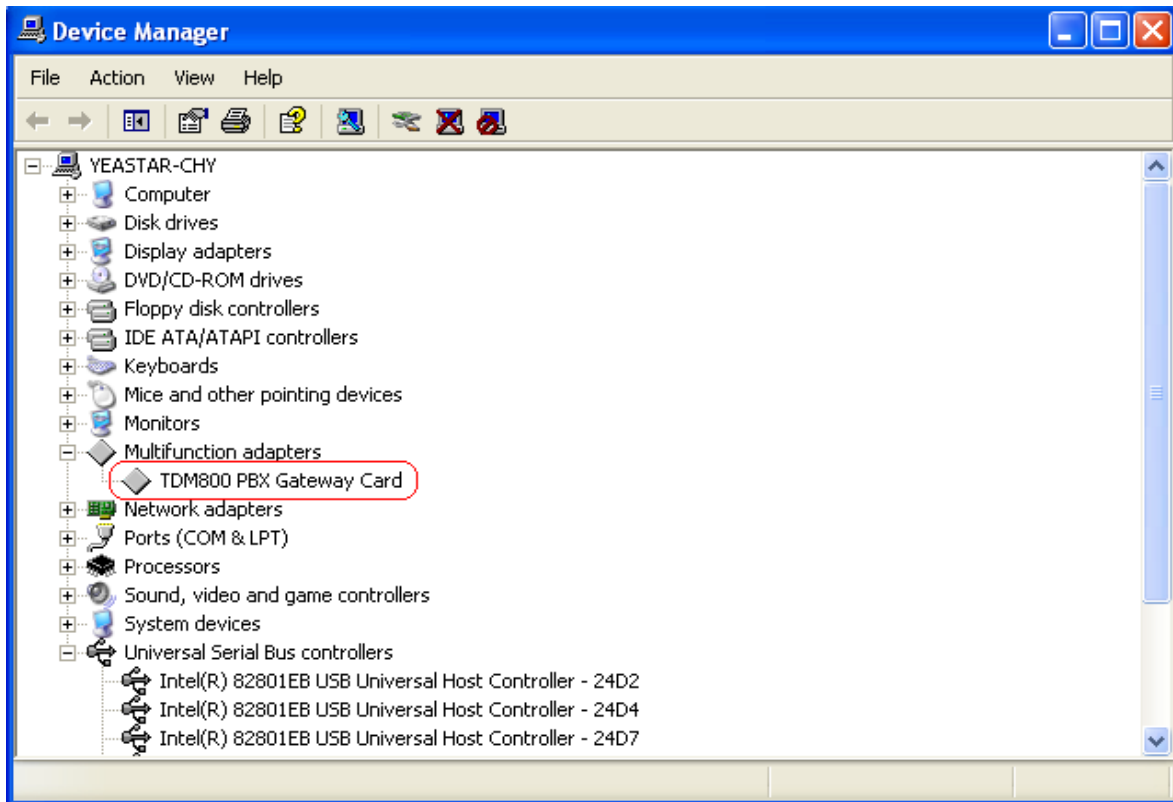


Figure 17

Attention: You should find the LEDs of relevant modules on TDM800 card were lighted if the driver has been successfully installed on PC.